



CHALLENGING LIGHT
FOR OUR PARTNERS

MICRO TEXTURE SURFACE ANALYZER

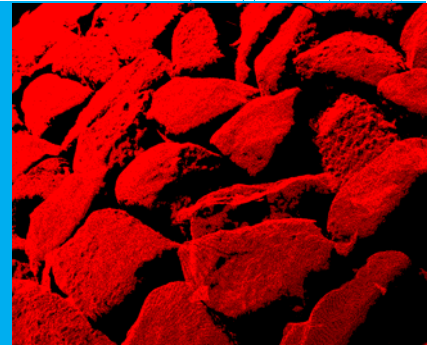
INO is a world-class R&D center specializing in optics and photonics with over a decade of success in developing innovative solutions. INO harnesses the full power of existing technologies and develops new ones where necessary to provide its clients with unique solutions to their problems from concept to short-run production.



THE ANALYZER

The micro texture surface analyzer is a lab instrument that was developed to characterize the surface features of aggregates used in pavement mixes. The system uses a high precision translation table combined with a high resolution laser profiler that has been optimized to measure asphalt samples and aggregates with a vertical resolution of ± 7.5 microns. Sample sizes of 8x20cm can be scanned with high accuracy in under a minute. Aggregate samples can be scanned before, during, and after accelerated aging and polishing tests to determine how their surface texture varies over time and number of test cycles.

The provided software automatically evaluates the micro-surface characteristics and reports the results in terms of the number and the average angles of surface texture descriptors. The user can also modify the parameters of the texture descriptors (size limits) and can view both the real 3D profile of an aggregate and the associated descriptor model of the surface on a profile-by-profile basis. Average results are also calculated over the entire surface.



8010108
PRM-100108

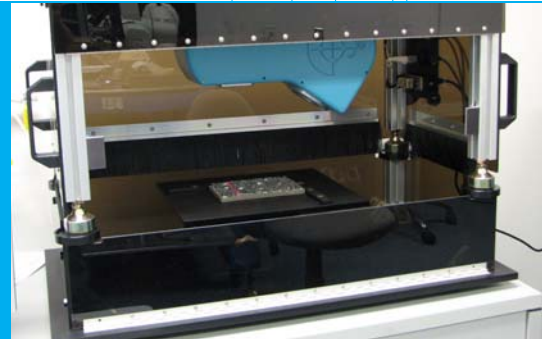


CHALLENGING LIGHT
FOR OUR PARTNERS

MICRO TEXTURE SURFACE ANALYZER

PRELIMINARY SPECIFICATIONS

Field of view - transverse	80mm
Field of view - longitudinal	200mm
Depth of field	20mm
Resolution - transverse	± 20µm
Resolution - longitudinal	± 30µm
Resolution - vertical	± 7.5µm
Number of pixels per profile	2,008 pixels
Capture speed	30 profiles/second
Interface	Camera link and Ethernet
Laser	660nm, 50mW, Classe IIIA
Dimensions	15" x 24" x 30"
Weight (without the base)	70lbs
Time to scan 200mm sample	Approx. 30 sec



Our lab instrument—the micro texture surface analyzer



Digitalization of an aggregate sample.

**All specifications subject to change without notice.*

BENEFITS

- . Characterizes surface micro-texture
- . Repeatable results
- . Helps indicate wear resistance rates of aggregates that have been through accelerated aging and/or polishing cycles
- . Evaluates friction-related characteristics of asphalt samples and aggregates
- . Evaluates macro-texture (MPD-Mean Profile Depth)